

# **Shelly Fire After Action**

Siskiyou County Office of Emergency Services

Bryan Schenone

# Shelly Fire Facts

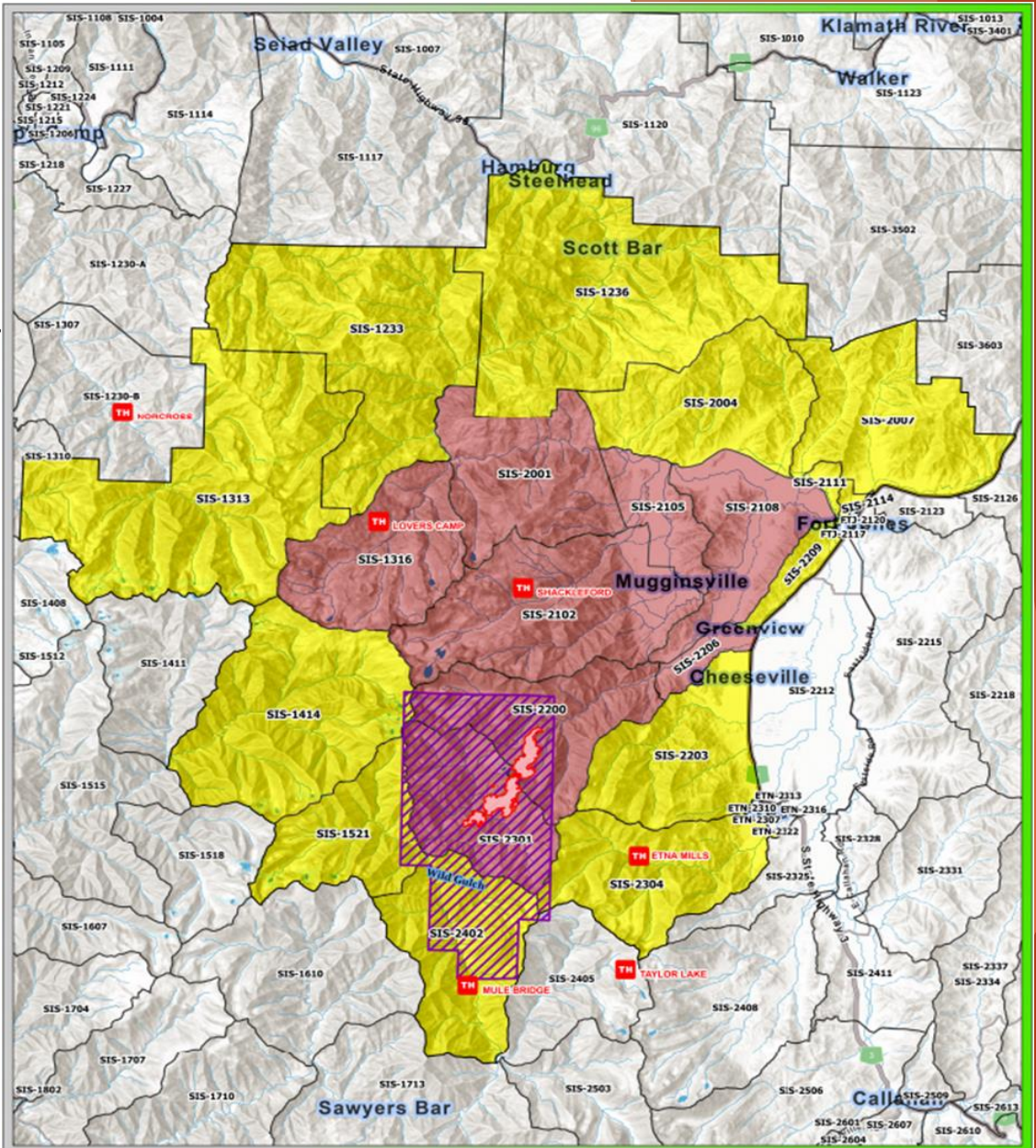
- Incident Name: Shelly Fire
- Location Affected: Scott Valley, Quartz Valley
- Date of Start: July 3, 2024 - Date of Containment: August 6, 2024
- Active for 34 Days
- Total Area Affected: 15,520 acres
- Cause: Under Investigation (as of September 9, 2024)
- County EOC Activations Level 2
- Primary Agencies Involved: U.S. Forest Service, CAL FIRE, local volunteer fire departments, Bureau of Land Management (BLM), and various federal, state, and local agencies.

## Shelly Fire Captured by CalFire



# Evacuations

- ▶ Alert and Warning:
  - ▶ Evacuation warnings were issued through the County's ReadySiskiyou Alerts platform
  - ▶ Integrated Public Alerts and Warnings (IPAWS)
  - ▶ Genasys Protect
  - ▶ Shared via social media posts.
- ▶ Warnings:
  - ▶ 19 Zones
  - ▶ Population 1,859
  - ▶ Structures 1,618
- ▶ Orders
  - ▶ 10 Zones
  - ▶ Population 1,539
  - ▶ Structures 1,178



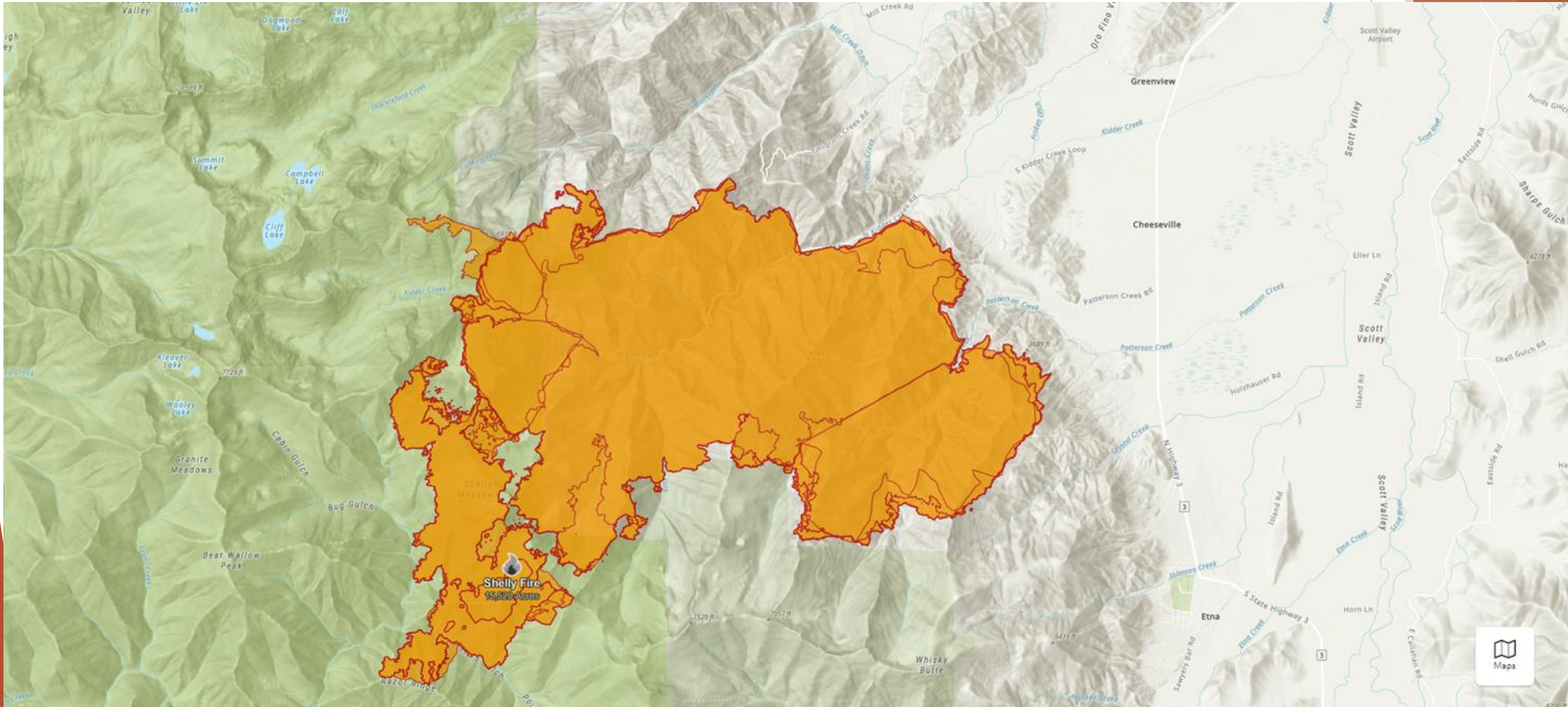
 Wildfire Daily Fire Perimeter  
Warning  
Evacuation Order  
Evacuation Zone  
Forest Closure

**PUBLIC INFORMATION**  
**SHELLY**  
CA-KNF-005159  
07/08/24

 CAL FIRE  
 SISKIYOU COUNTY  
 CALIFORNIA DEPARTMENT OF FORESTRY AND FIRE PROTECTION  
1500000  
NAD83 CALIFORNIA

# Final Fire Perimeter

15,520 acres  
Forest Closures



# Animal Sheltering





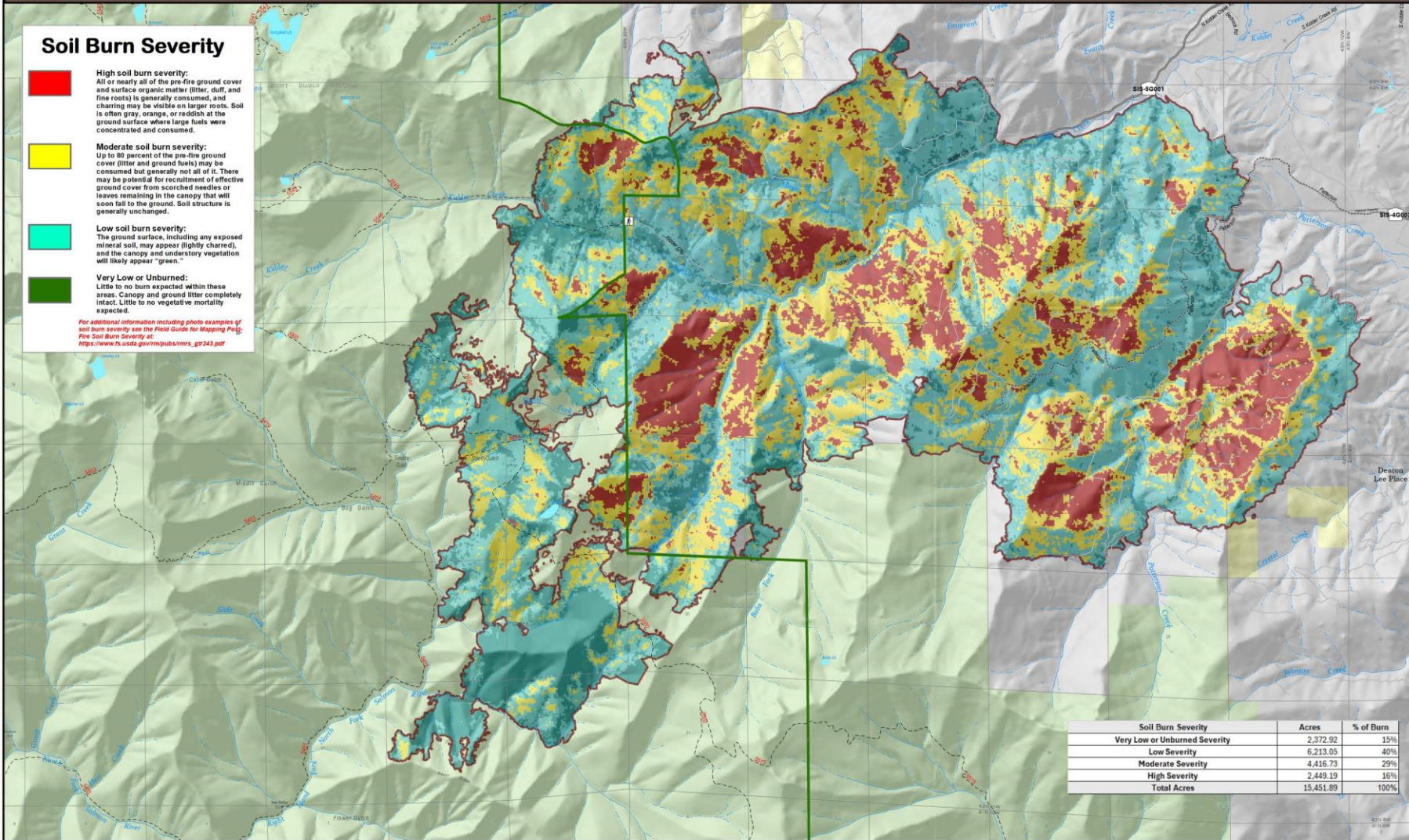
# Soil Burn Severity Map - Shelly Fire

Shelly BAER

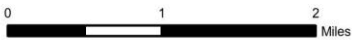
## Soil Burn Severity

- **High soil burn severity:**  
All or nearly all of the pre-fire ground cover and surface organic matter (litter, duff, and fine roots) is generally consumed, and charring may be visible on larger roots. Soil is often gray, orange, or reddish at the ground surface where large fuels were concentrated and consumed.
- **Moderate soil burn severity:**  
Up to 80 percent of the pre-fire ground cover (litter and ground fuels) may be consumed but generally not all of it. There may be potential for recruitment of effective ground cover from scorched needles or leaves remaining in the canopy that will soon fall to the ground. Soil structure is generally unchanged.
- **Low soil burn severity:**  
The ground surface, including any exposed mineral soil, may appear (lightly charred), and the canopy and understory vegetation will likely appear "green."
- **Very Low or Unburned:**  
Little to no burn expected within these areas. Canopy and ground litter completely intact. Little to no vegetative mortality expected.

For additional information including photo examples of soil burn severity see the Field Guide for Mapping Post-Fire Soil Burn Severity at: [https://www.fs.usda.gov/pubs/nmrs\\_g0243.pdf](https://www.fs.usda.gov/pubs/nmrs_g0243.pdf)



Soil Burn Severity	Acres	% of Burn
Very Low or Unburned Severity	2,372.92	15%
Low Severity	6,213.05	40%
Moderate Severity	4,416.73	29%
High Severity	2,449.19	16%
<b>Total Acres</b>	<b>15,451.89</b>	<b>100%</b>



- Fire Perimeter
- Wilderness
- - - Non-Motorized Trail
- National Forest
- BLM
- Private/Undetermined
- Trailhead

**Disclaimer:**  
This is a product of BAER rapid assessment.  
Further information concerning the accuracy and appropriate uses of this data may be obtained from the USDA Forest Service. The Forest Service makes no warranty, expressed or implied, including the warranties of merchantability and fitness for a particular purpose, nor assumes any legal liability or responsibility for the accuracy, reliability, completeness or utility of these geospatial data, or for the improper or incorrect use of these geospatial data.  
These geospatial data and related maps or graphics are not legal documents and are not intended to be used as such. The data and maps may not be used to determine title, ownership, legal descriptions, boundaries, legal jurisdictions, or restrictions that may be in place on either public or private land. Natural hazards may or may not be depicted on the data and maps, and land users should exercise due caution. The data is dynamic and may change over time. The user is responsible to verify the boundaries of the geospatial data and to use the data accordingly.

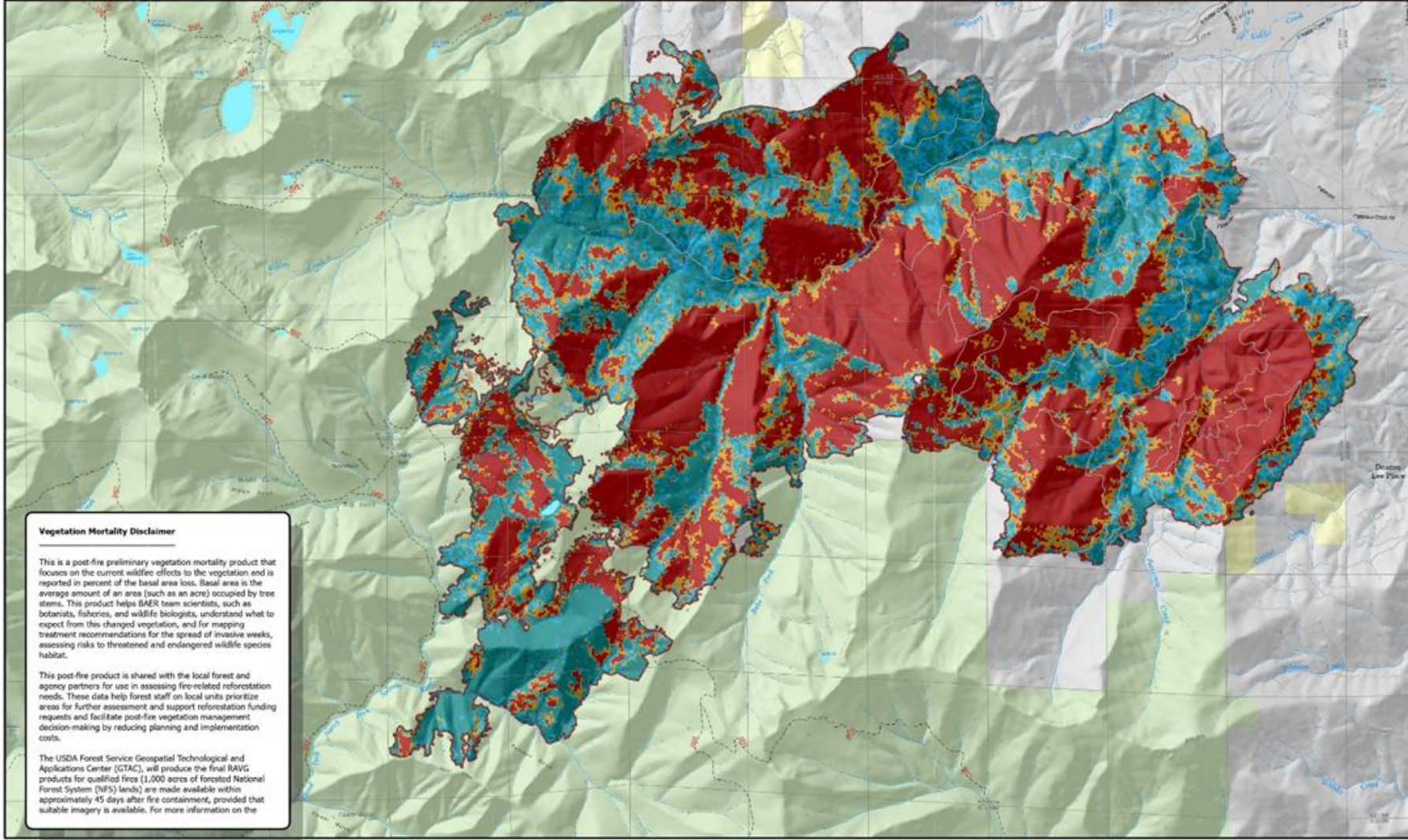


7/31/2024  
NAD 1983 UTM Zone 10N



# Vegetation Mortality

Shelly BAER

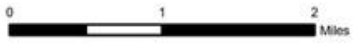


**Vegetation Mortality Disclaimer**

This is a post-fire preliminary vegetation mortality product that focuses on the current wildfire effects to the vegetation and is reported in percent of the basal area loss. Basal area is the average amount of an area (such as an acre) occupied by tree stems. This product helps BAER team scientists, such as botanists, fisheries, and wildlife biologists, understand what to expect from this changed vegetation, and for mapping treatment recommendations for the spread of invasive weeds, assessing risks to threatened and endangered wildlife species habitat.

This post-fire product is shared with the local forest and agency partners for use in assessing fire-related reforestation needs. These data help forest staff on local units prioritize areas for further assessment and support reforestation funding requests and facilitate post-fire vegetation management decision-making by reducing planning and implementation costs.

The USDA Forest Service Geospatial Technological and Applications Center (GTAC), will produce the final RAVG products for qualified fires (1,000 acres of forested National Forest System (NFS) lands) are made available within approximately 45 days after fire containment, provided that suitable imagery is available. For more information on the



**Disclaimer:**  
This is a preliminary product and is not intended for use in legal proceedings. The data is provided as a service to the public and is not guaranteed. The data is provided as a service to the public and is not guaranteed. The data is provided as a service to the public and is not guaranteed.

**Vegetation Mortality**

- 0% BA Mortality
- 0% - 25% BA Mortality

- 25% - 75% BA Mortality
- >75% BA Mortality
- Fire Perimeter

- National Forest
- BLM
- Undetermined





# Post Fire Clean-up

- ▶ Kidder Creek Main Stem
- ▶ Erosion Control
  - ▶ Debris Flows
- ▶ Mitigation Projects

