

# 2022 Wildfire Mitigation Plan Update



## Grid Design and System Hardening

Kevin Schiedler, Wildfire Mitigation Delivery Director  
November 1, 2022



# Major Grid Hardening achievements to date:

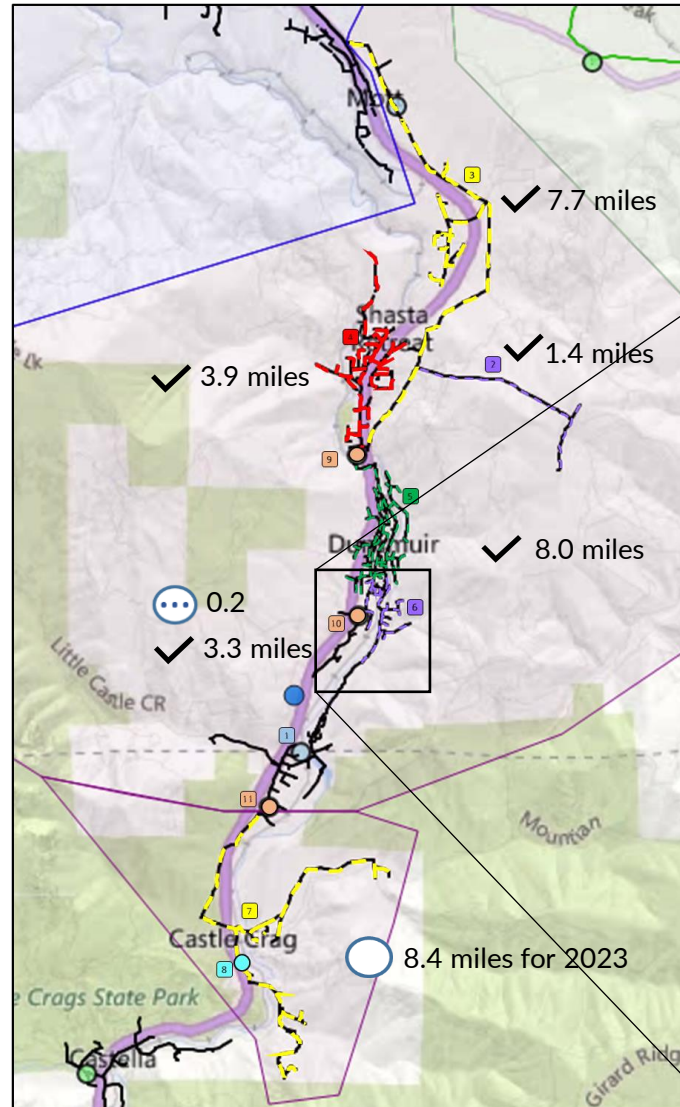
- ✓ Completed installation of over 60 miles of covered conductor in HFTD
- ✓ Replaced over 1200 transmission and distribution poles with non-wood alternatives including steel and fiberglass
- ✓ Completed installation of over 80 reclosers and relays
- ✓ Replaced over 800 pieces of expulsion equipment with non-expulsion equipment

These investments and important grid hardening work will continue over the coming years.



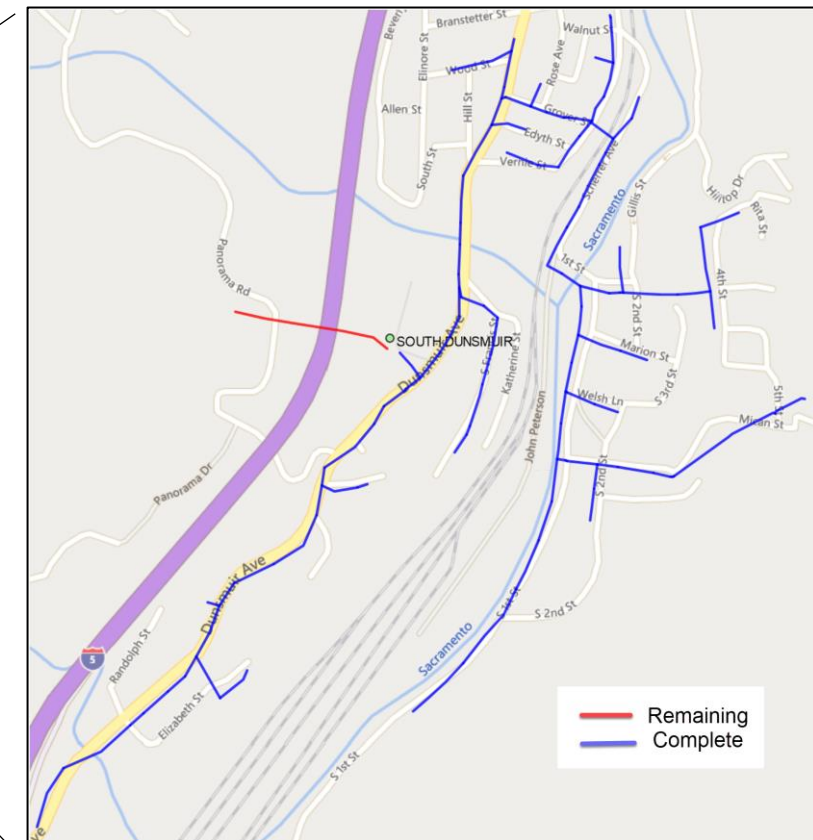
# Grid Hardening for PSPS Mitigation

- ✓ Covered conductor, combined with other **grid hardening** is projected to **decrease PSPS impacts** and likelihood
- ✓ Covered conductor physically **prevents the initiation** of flash-over due to vegetation
- ✓ Mechanical properties of covered conductor reduce PSPS impacts by
  - ✓ (a) making PSPS substantially less likely and
  - ✓ (b) helping PacifiCorp methodically reduce the size and areas of impact.



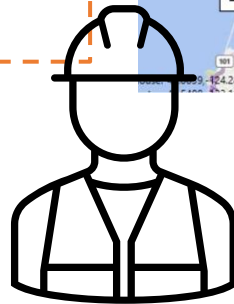
## Dunsmuir PSPS Zone

Initiative	Total	Complete / Nearly Complete	Planned Completion
Line Rebuild (miles)	32.9	24.5	2023
Reclosers/Relays	6	5	2023

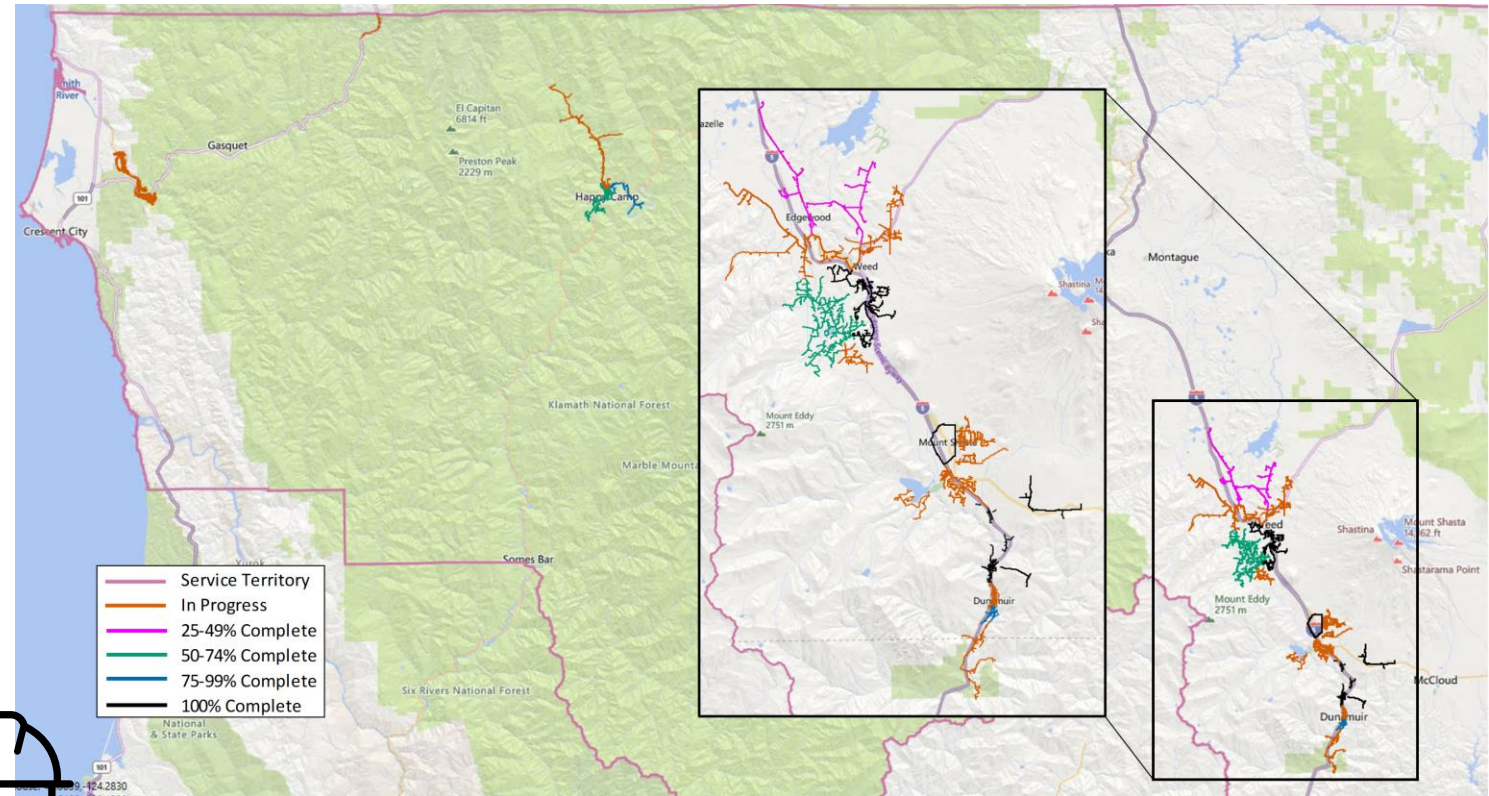


# Key Initiative Targets

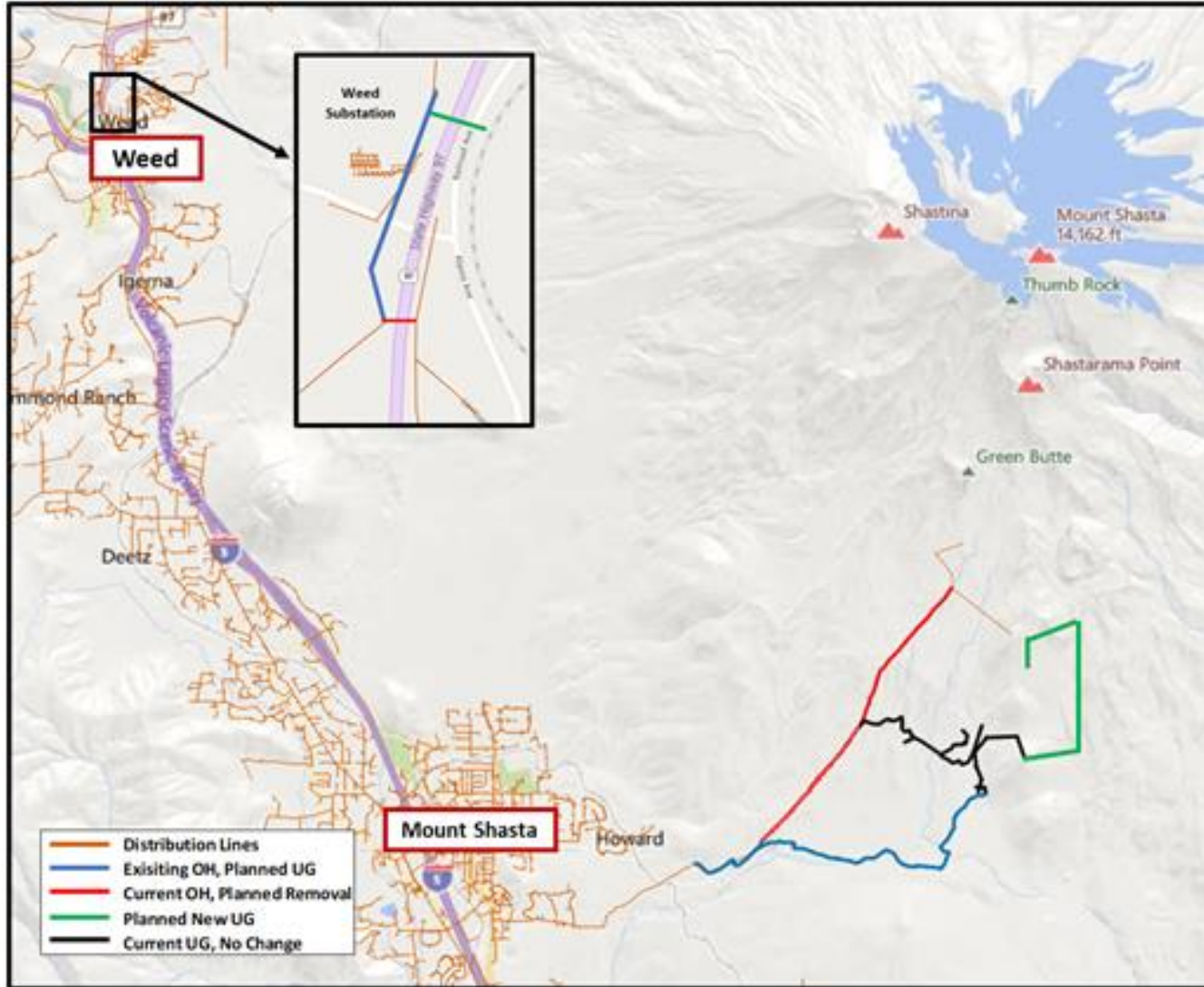
- ✓ Separate expulsion fuse replacement program: replacing 2,269 fuses
- ✓ Increased pace of system automation project deployment
- ✓ Continued ramp up of covered conductor installation
- ✓ New Fault Circuit Indicators installation: Over 500 operational in 2022



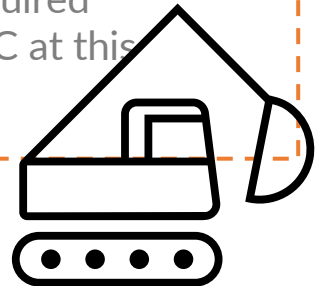
## Covered Conductor Projects in Process



# Undergrounding Scoped



- ✓ Two projects identified for potential underground [Mt. Shasta and Outside Weed Substation]
- ✓ Collaboration with US Forest Service
- ✓ Underground Cost Benefit Evaluation:
  - ✓ Heavy tree canopy with limited access
  - ✓ High elevation and high loading require full pole replacement with more poles per line mile than lower elevations
  - ✓ No customer meter replacements required=Lower cost than CC at this location





Questions?