

S1/2 of SEC. 21 T40N R4W

Tax Area Code
98-03

map is for assessment
and is not for the
interpreting legal boundary
regulations and/or
division laws.

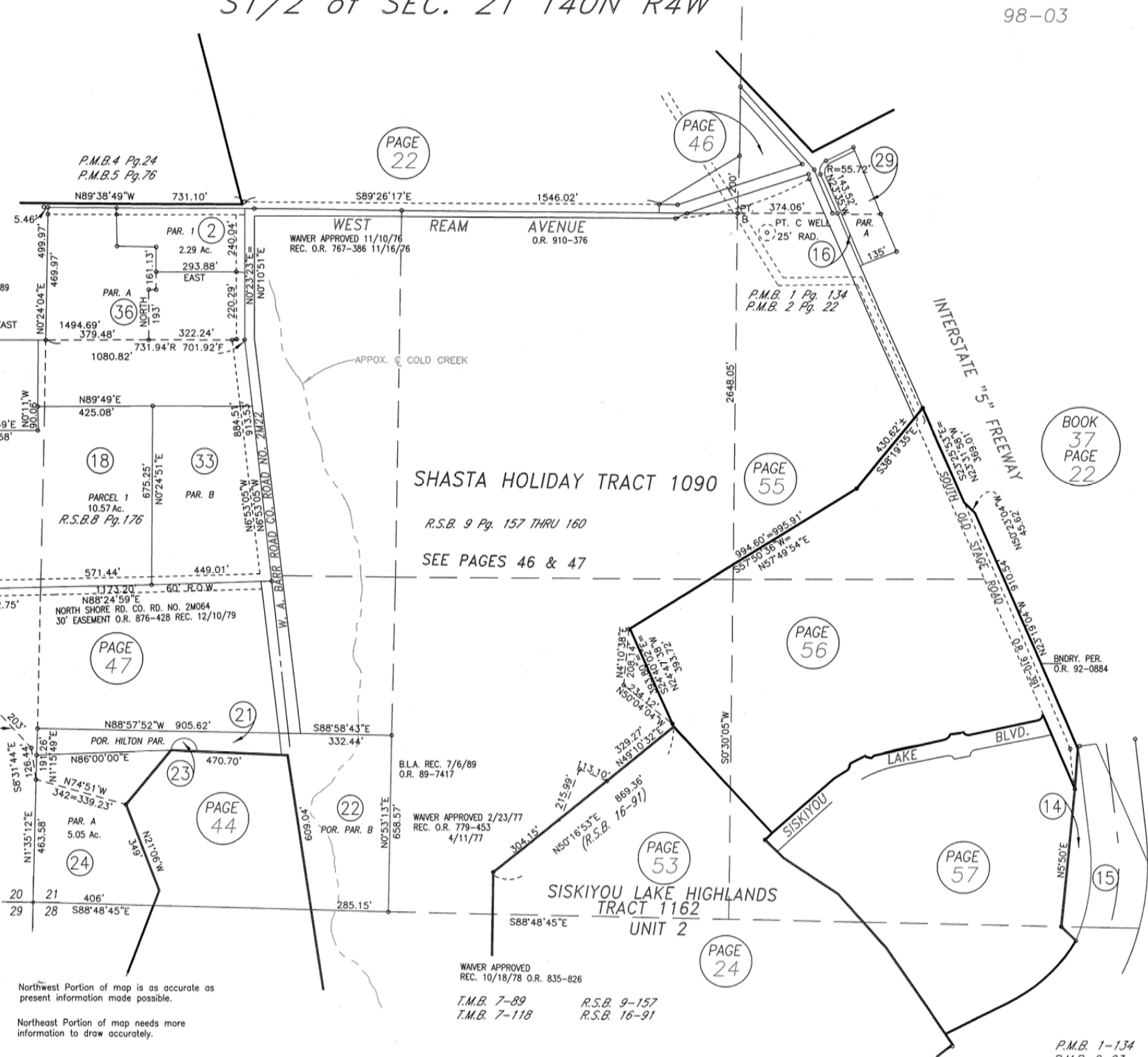
County Assessor's Office
1980
Remapped 1984

Northwest Portion of map is as accurate as
present information made possible.
Northeast Portion of map needs more
information to draw accurately.

WAIVER APPROVED
REC. 10/18/78 O.R. 835-826

T.M.B. 7-89 R.S.B. 9-157
T.M.B. 7-118 R.S.B. 16-91

P.M.B. 1-134
P.M.B. 2-23



PAGE 22

PAGE 46

PAGE 55

PAGE 56

PAGE 53

PAGE 24

BOOK 37
PAGE 22

P.M.B. 4 Pg. 24
P.M.B. 5 Pg. 76

P.M.B. 1 Pg. 134
P.M.B. 2 Pg. 22

R.S.B. 8 Pg. 176

SHASTA HOLIDAY TRACT 1090

R.S.B. 9 Pg. 157 THRU 160

SEE PAGES 46 & 47

SISKIYOU LAKE HIGHLANDS
TRACT 1162
UNIT 2

PAGE 57

P.M.B.
P.M.B.
P.M.B.